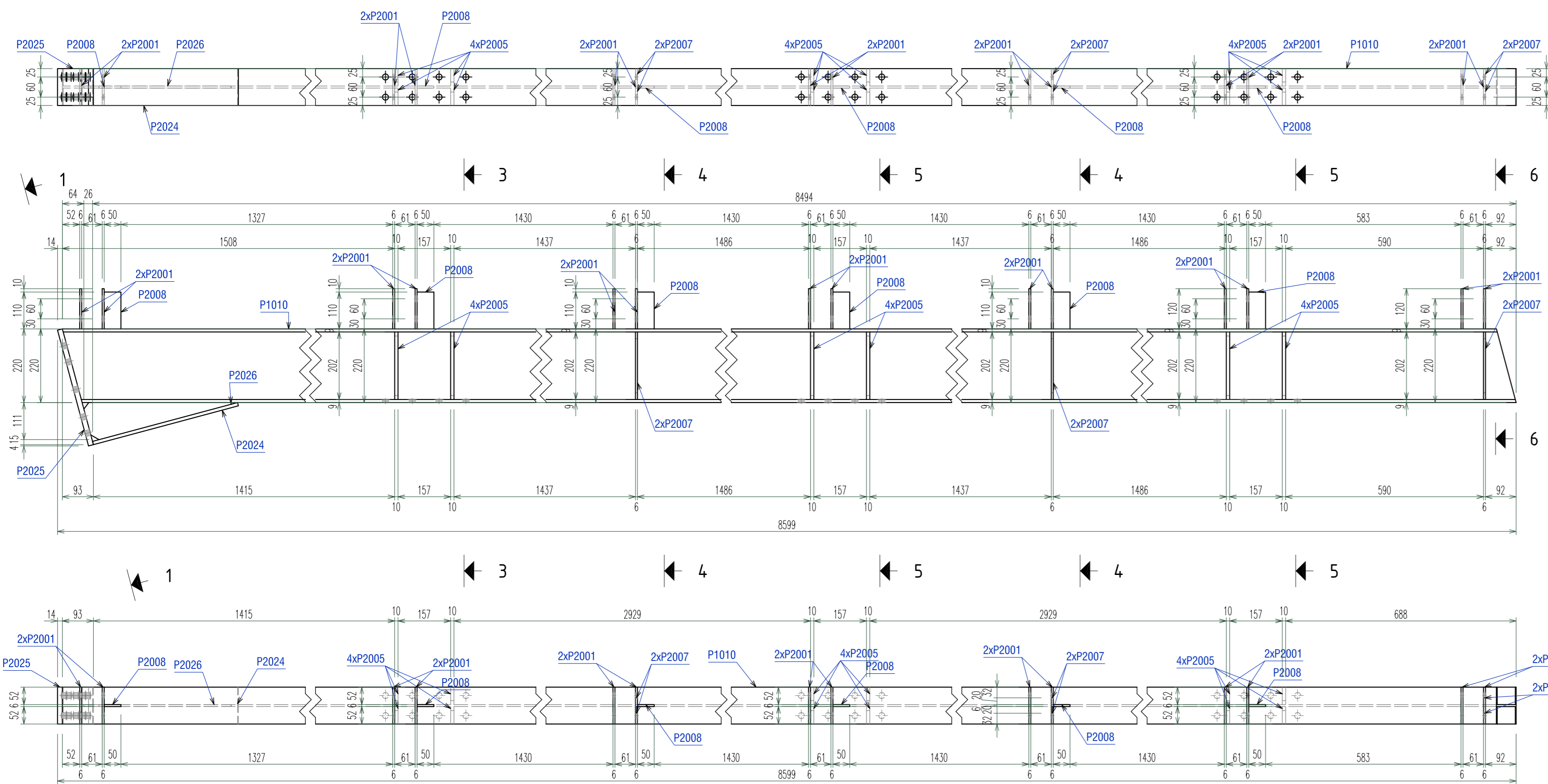
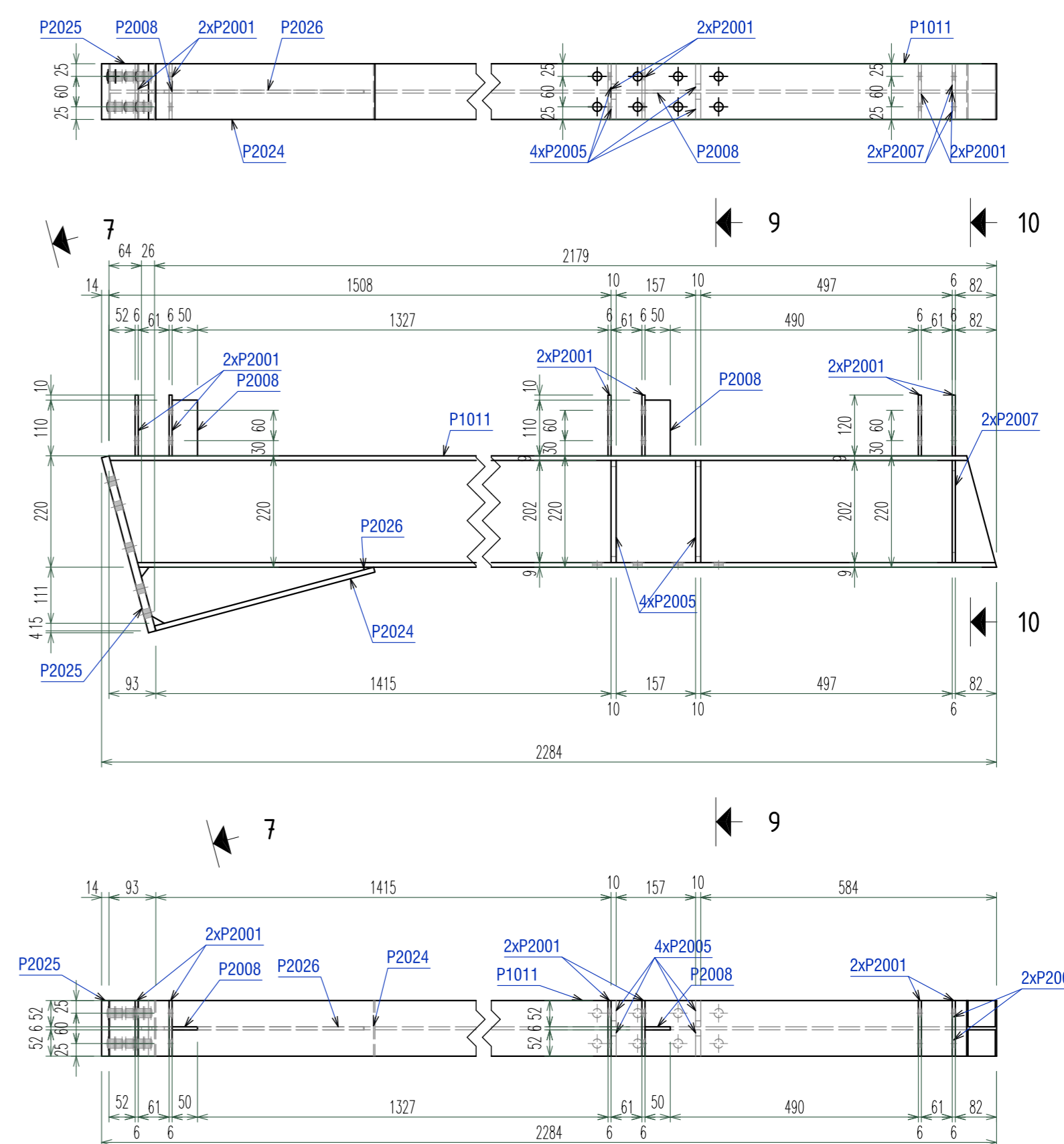


ASSEMBLY: **GR.2** IPE220  
Qty.: 15 pcs.  
Scale - 1:10



ASSEMBLY: **GR.3** IPE220  
Qty.: 11 pcs.  
Scale - 1:10



Sect. 1 - 1  
Scale 1:10

Sect. 3 - 3  
Scale 1:10

Sect. 4 - 4  
Scale 1:10

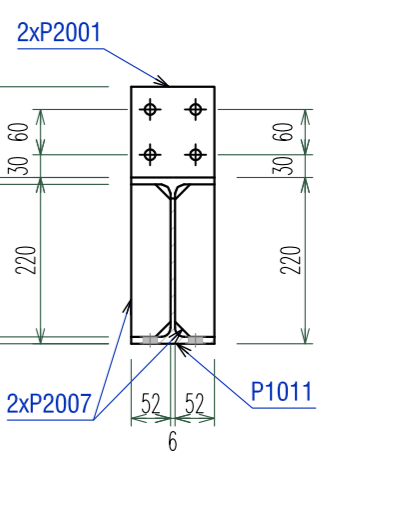
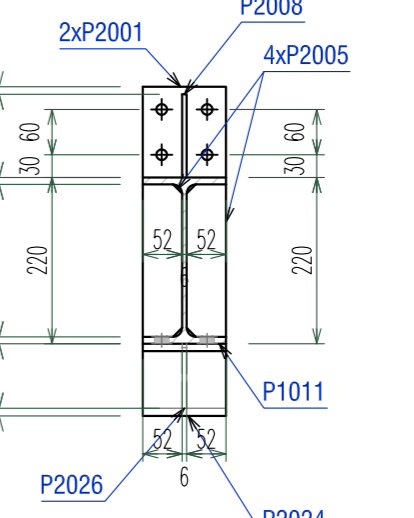
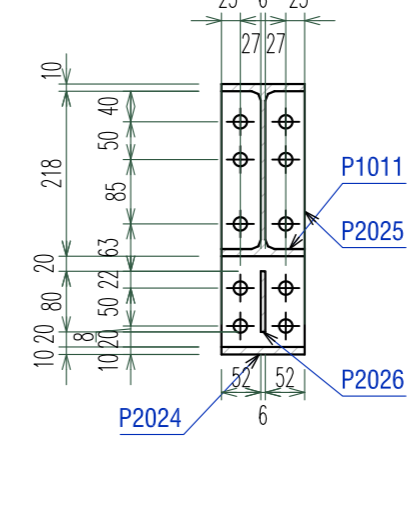
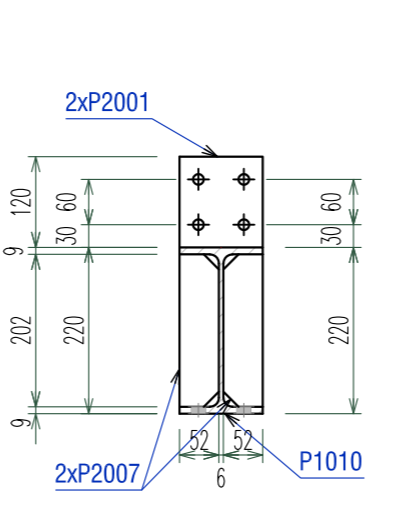
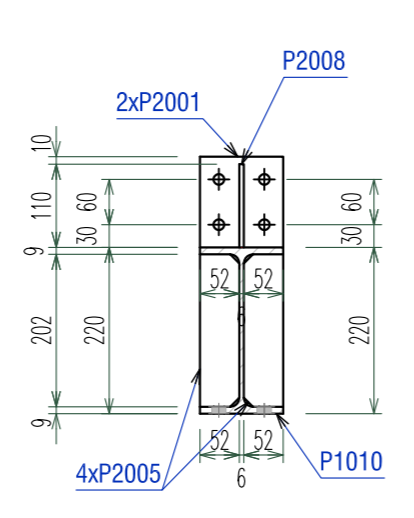
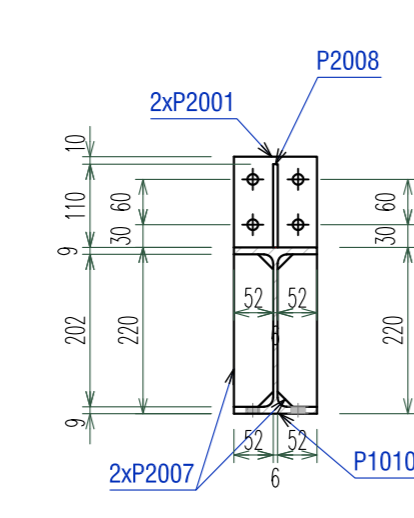
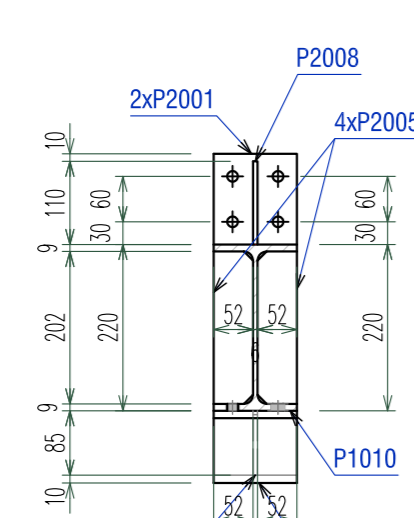
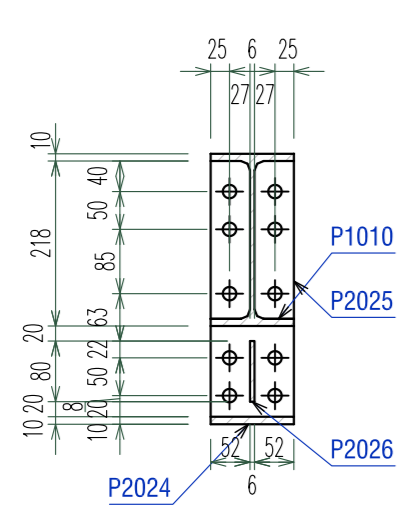
Sect. 5 - 5  
Scale 1:10

Sect. 6 - 6  
Scale 1:10

Sect. 7 - 7  
Scale 1:10

Sect. 9 - 9  
Scale 1:10

Sect. 10 - 10  
Scale 1:10



Mark	Quantity	Description	Length	Grade	Part weight	Total weight
<b>GR.2</b>	<b>15</b>	<b>IPE220</b>				
P1010	15	IPE220	8584	S355	224.91	3373.69
P2025	15	PL 15x110x358	358	S355	4.63	69.51
P2024	15	PL 10x110x448	448	S355	3.87	58.03
P2026	15	PL 6x115x429	429	S355	1.25	18.68
P2005	180	PL 10x52x202	202	S355	0.81	146.24
P2001	210	PL 6x110x120	120	S355	0.62	130.56
P2007	90	PL 6x52x202	202	S355	0.48	42.79
P2008	90	PL 6x50x110	110	S355	0.26	23.31
One assembly weight:					257.52	3862.8
<b>GR.3</b>	<b>11</b>	<b>IPE220</b>				
P1011	11	IPE220	2269	S355	59.45	654
P2025	11	PL 15x110x358	358	S355	4.63	50.97
P2024	11	PL 10x110x448	448	S355	3.87	42.55
P2026	11	PL 6x115x429	429	S355	1.25	13.7
P2005	44	PL 10x52x202	202	S355	0.81	35.75
P2001	66	PL 6x110x120	120	S355	0.62	41.03
P2007	22	PL 6x52x202	202	S355	0.48	10.46
P2008	22	PL 6x50x110	110	S355	0.26	5.7
One assembly weight:					77.65	854.16
Combined Total						<b>4716.96</b>

**LEGENDA DENUMIRI PROFILE SI TABLE / PROFILES & PLATES NAMES:**

RHS, Tv.	- Teava patrata/rectangulara (Square/rectangular hollow section)
RO, Tv.Ø, RHSØ	- Teava rotunda (Circular hollow section)
FL	- Platabanda (Flat bar)
L, LNP	- Cornier (Angle profile)
U, UNP, UPE	- Profil U (Channel profile)
I, IPE, IPN	- Profil I (I profile)
HEA, HEB	- Profil I cu talpa late (Wide flanges I profile)
C, Z	- Profil C sau Z format la rece (Cold-rolled C or Z profile)
TG, PL	- Tabla groasa (Thick plate)
RD	- Bara din otel rotund (Round bar)

**NOTE CONECTIE METALICA**

- Condițiile tehnice de calitate vor respecta prevederile SR EN 1090-2: Executarea structurilor din otel si aluminiu. Partea 2: Cerinte tehnice pentru structuri de otel. Clasa de executie a structurilor metalice este **EXC 3**
- Tolerante la executia in uzina a elementelor cu dimensiuni: < 5.00m - 0.50mm / > 5.00m - 1.00mm
- Nivelul de acceptare pentru imbinarile sudate este "B" pentru cordoanele de sudura in adancime si "C" pentru cordoanele de sudura in relief. In conformitate cu normativul C150-1999.
- Daca nu se specifica altfel in desen sudurile se vor executa in relief cu grosimea egala cu 0.7x<sub>ts</sub>, unde <sub>ts</sub> reprezinta grosimea minima a elementelor care se sudeaza, pe toata lungimea de contact a acestora.
- Placile de capat se vor suda cu sudura in adancime in K cu patrundere totala sau cu sudura in V si resudarea radacinii.
- In atelierul de constructii montaj se va face obligatoriu preasamblarea tronsoanelor si se vor verifica dimensiunile ansamblului. Orice ne potrivire de date sau de cote va fi semnalata proiectantului. Constructorul este direct raspunzator pentru asigurarea stabilitatii structurii pe durata montajului acestela.
- Toate cotele sunt date in mm, cu exceptia cotelor de nivel care sunt date m.
- Protectia anticoroziva a structurilor metalice: cf. GP 121/1-2013. Clasa de coroziivitate: **C2 - slaba**  
Pentru structuri deschise amplasate la exterior expuse precipitatilor se recomanda zincarea termica. In cazul structurilor zincate termic, in elementele inchise se prevad obligatoriu gauri de zincare.

MATERIALE CONECTIE METALICA / STEEL STRUCTURE MATERIALS:		
<b>ELEMENT:</b>	<b>MATERIAL:</b>	<b>STANDARD:</b>
OTEL LAMINAT STRUCTURA METALICA Structural steel	S355J0 (H) / S235JR (H) - laminat	SR EN 10025, SR EN 10210, SR EN 10219 SR EN 10162
ORGANE DE ASAMBLARE Bolting assemblies	GR.10.9 - partial filetate GR.10.9 - complet filetate	SREN 14399 EN ISO 4017
SURUBURI DE ANCORAJ Anchor bolts	S355/ gr.6.8 - carcasa suruburi gr.5.8 - ancoraj chimic	

MOMENTE DE STRAGERE PENTRU ORGANELE DE ASAMBLARE									
Nr. crt.	Diametrul nominal	Grupa	MOMENT FINAL DE STRANGERERE (Nm)	50%-70% DIN MOMENTUL FINAL DE STRANGERERE (Nm)	Nr. crt.	Diametrul nominal	Grupa	MOMENT FINAL DE STRANGERERE (Nm)	50%-70% DIN MOMENTUL FINAL DE STRANGERERE (Nm)
1	M12	10.9	100	50-70	5	M24	10.9	800	400-560
2	M16	10.9	250	125-175	6	M27	10.9	1250	625-875
3	M20	10.9	450	225-315	7	M30	10.9	1650	825-1155
4	M22	10.9	450	312-437					

PROIECTANT GENERAL / <b>PR-EXPERT DESIGN</b>		PROIECT EXTINDEREA PE VERTICALA (MANSARDARE) SI DOTARE A CLADIRII SCOLII GIMNAZIALE MIRON COSTIN SI ADAPTAREA SISTEMULUI DE EDUCATIE LA EVOLUTIA TEHNOLOGICA		FAZA P.T.
PROIECTANT STRUCTURAL ALCO INGINERIE		AMPLASAMENT Strada Posti nr. 10, Mun. Suceava, Jud. Suceava		BENEFICIAR PRIMARIA MUNICIPIULUI SUCEAVA
RESPONSABILITATE: SEF PROIECT arh. M. Ulanovschi PROIECTAT Ing. Coca Alexandru DESENAT Ing. Coca Alexandru VERIFICAT		TITLUL PLANSĂ <b>DETALII UZINARE SUBANSAMBLURI GR.2-GR.3</b>		
VERIFICARE M.D.L.P.A. Ing. Ion Cingire		SCARA DE REDACTARE 1:10		DATA INTOCMIRII 10/2023
		NR. PLANSA <b>RM-14</b>		
REZEVIA		DATA		